

KALPATARU TOWERS

play room, designer playgrounds, kids' library, playschool."

Increasingly, even township projects are designed with the best of amenities to extend a holistic living experience to the end user: Manju Yagnik, Vice-Chairperson, Nahar Group says, "Nahar's Amrit Shakti is our township project which is a successful lifestyle project, inspired by global living. We are constructing Mumbai's largest podium with residential towers and plus a garden atop, which is 70% completed. Similarly, a lavish Club House which is under construction, will have the unique distinction of being one of the largest clubs in any residential complex in Mumbai when completed."

In continuation with their commitment to child-friendly homes, Rustomjee has also pro-

and Food Court, water bodies and much more.

As amenities get upgraded, developers are also ensuring that the design standards are at par with the global trends. Paras Gundecha, President of MCHI-CREDAI and Director, Gundecha Builders says, "We are using the best construction techniques like MIVAN for our projects. Also, more and more builders are now appointing foreign architects to conceptualise their projects differently catering to the international standards. A lot of the material we use for our amenities is imported in the form of flooring, kitchen accessories and sanitary ware. Much of this is already integrated with the help of smart technology, which make the home controls easier and much more flexible to operate."

Conceptualising a project differently is assuming a great deal of importance in today's time. The customer, who comes with a global exposure, is looking for a world-class experience when it comes to buying his home. Combining the best of technology and design, developers too are leaving no stone unturned to deliver a unique product to home buyers.

With prime focus on luxury housing, Kalpataru aims to provide its customers with unmatched style and quality. Apart from spacious and well-designed homes, each residential complex offers state-of-the-art clubhouses equipped with gymnasium, walkways, open spaces, landscaped gardens, children's play area, indoor and outdoor sports facilities, yoga room, swimming pool and toddlers' pool, spa, Jacuzzi, ample parking space and sound security systems.

A Kalpataru spokesperson says, "Right from technology

COMFORT AND CONVENIENCE

Developers are increasingly offering amenities with a difference to give their projects an international edge, says **SHILPA SACHDEV**

used in construction to amenities provided in its projects, everything at our end attains highest importance. All our projects are located in close proximity to important basic and social infrastructure. While we are constructing modern homes, we also contribute towards sustainable living by including green features in the projects."

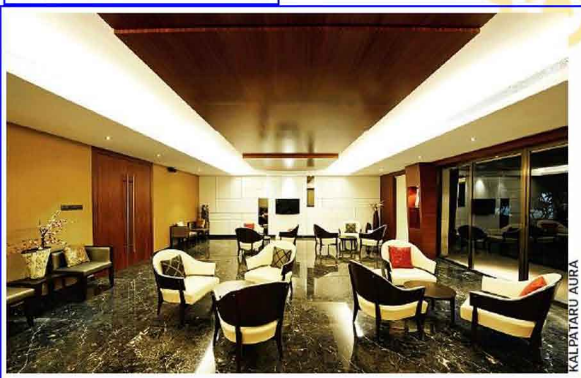
Thanks to the growing sense

of eco-consciousness, developers have also started ensuring that their projects are designed in harmony with the nature of life. Attention to detail has become the buzzword, taking into account the needs of different sections of society and also integrating the same into the design of the project.

To cut a fine example, Rustomjee believes that children deserve childhoods and with this thoughtfulness they have introduced children friendly homes - a permanent feature in all their upcoming properties across the city. Percy Chowdhry, Director, Rustomjee says, "All the Rustomjee properties across the city have specially planned spaces for children, not just a kids' zone or a play area but the design aspects/ principles within homes - low height/adjustable wash basins, no-traffic promenade, anti-skid tiles in bathrooms, shock-proof switches, no sharp edges, anti-fungal paints, elevator sensors amongst other amenities- crèche, music and

vided for a 12-acre exclusive amusement park for kids inside their township Rustomjee Evershine Global City at Virar called 'The Yazoo Park'. This unique offering comprises a host of adventure rides like the Toy Train, Giant Wheel, Merry-Go-Round, Game Zone, Musical Fountains, along with vibrant Laser Shows, separate Mini-Amphitheatres for stage shows, Floating Restaurant

For a home buyer, comfort and convenience are of prime importance when it comes to zeroing down on a home and developers are working hard to provide the best of the amenities at the doorstep of the customer without compromising on the quality and style.



KALPATARU AURA



RUSTOMJEE EVERSHINE GLOBAL CITY